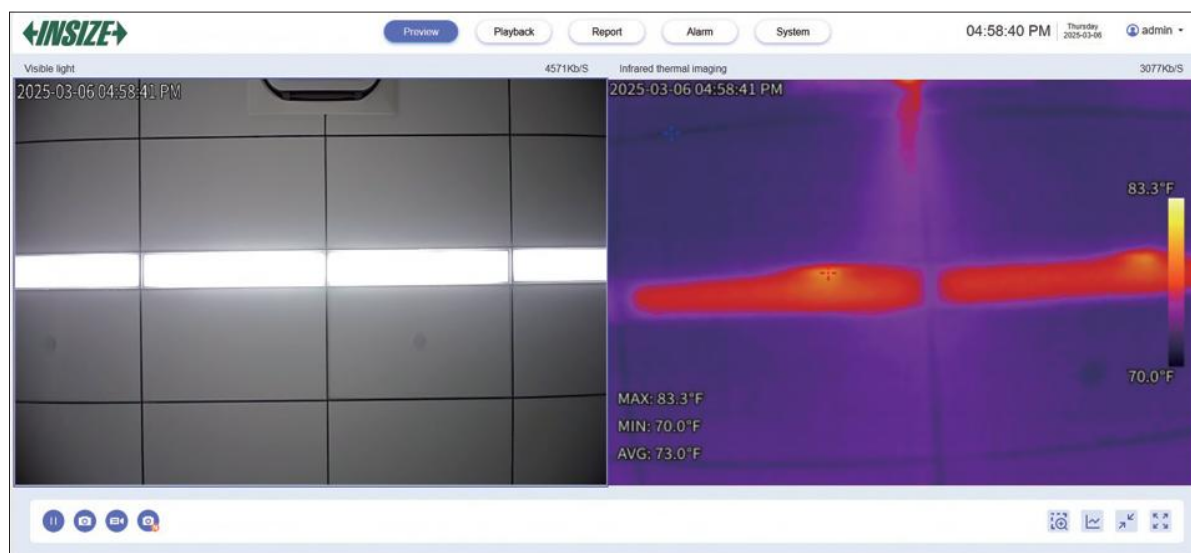


ONLINE INFRARED THERMAL IMAGING CAMERA PART No. 0237-LC550

IP67
WATERPOOF

- Suitable for electric power, electrical industry, mechanical industry, etc.
- Adopt 256×192 infrared detector, together with 1920×1080 visible light sensor
- Support real-time temperature measurement analysis, alarm setting, historical information query and export reports
- Support various installation methods such as magnetic mounting, wall mounting, vertical mounting, hanging mounting and tripod mounting
- Web-side control, no need other App or software



web-side real-time image

SPECIFICATION

| | | |
|-------------------------|--------------------------|--|
| Infrared image | detector type | unrefrigerated vanadium oxide, .0003"~.0006" |
| | infrared resolution | 256×192@.0005" |
| | thermal sensitivity/NETD | 45mK@86°F |
| | lens | .13", 56°×42° |
| | focusing mode | focus-free |
| | color palettes | 26: white hot, black hot, rainbow and so on |
| | featured function | detail enhancement, 2D/3D noise reduction, image flip, dual light fusion |
| Temperature measurement | measurement range | low: -4°F~302°F, high: 212°F~1022°F |
| | measurement accuracy | ±3.6°F or ±2%, whichever is greater |
| | measurement target | up to 21 targets (spot, line, rectangle, polygon and circle) can be simultaneously measured |
| | measurement function | cold/hot spot tracking, full-screen point temperature measuring, query and export of information |

SPECIFICATION

| | | |
|-------------------------|-----------------------|--|
| Visible light | sensor type | 1/2.7" CMOS |
| | max. resolution | 1920×1080 |
| | min. illuminance | color: 0.005lux |
| | lens | .11", 65°×49° |
| | fill light | white light |
| | featured function | visible light gain control, 2D/3D noise reduction, backlight compensation, wide dynamic, strong-light photoinhibition, image flip, exposure compensation |
| Image | video compression | H.264 |
| | image format | JPEG |
| Protocol and storage | network protocol | IPv4/IPv6, HTTP, SMTP, RTSP, TCP, DHCP, ONVIF (automatic search device, RTSP video stream and device control), GB/T28181, MQTT |
| | local storage | 4G EMMC |
| System function | language | Chinese/English |
| | user management | max. 20 users with three levels of user accounts (root, admin and user) |
| | fault detection | network interrupt detection, IP conflict detection, illegal access, storage exception |
| | intelligent function | sound and light alarm |
| Interface | power interface | DC12V±25% |
| | network interface | 100M/1000M ethernet port, POE (802.3 at) |
| | alarm interface | 1 input and 1 output |
| | other interface | RS485 |
| Environmental parameter | operating environment | -22°F~140°F, ≤95%RH (non-condensing) |
| | protection | IP67, TVS 6000V lightning protection and surge protection |
| Physical parameter | power | 3.5W |
| | dimension (L×W×H) | 2.80×1.18×4.13" |
| | weight | .66lb |

STANDARD DELIVERY

| | |
|---------------|------|
| Main unit | 1 pc |
| Adapter cable | 1 pc |
| Back panel | 1 pc |