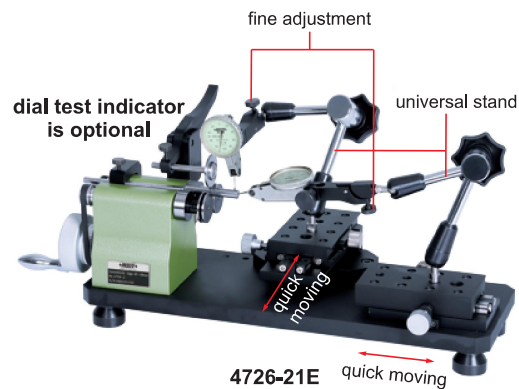
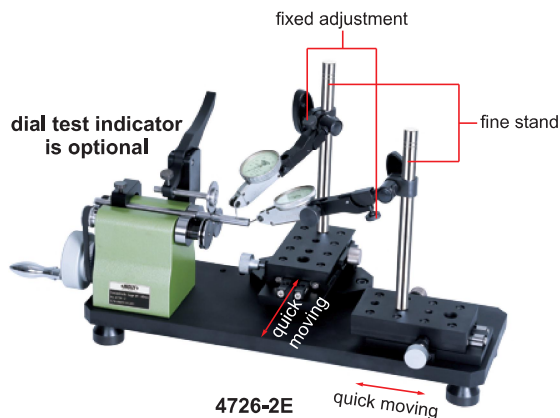
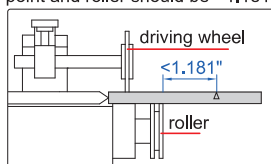


CONCENTRICITY GAUGES

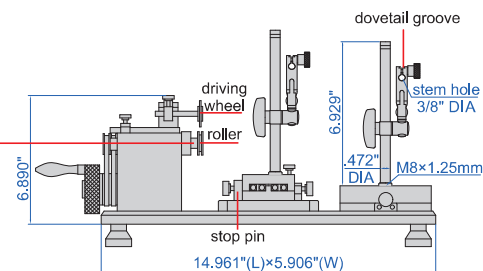
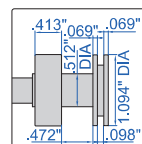
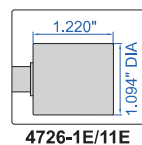
QUICK-POSITIONING, SUITABLE
FOR MASS MEASUREMENT



to ensure the accuracy .00008",
the distance between measuring
point and roller should be <1.181"



- With ball bearing, high stability, long working life
- Accuracy .00008"
- Optional accessory: dial test indicator



Part No.	Applicable diameter	Remark
4726-1E	.157" DIA~1.575" DIA	fixed stand, good rigidity
4726-2E	.079" DIA~1.575" DIA	fixed stand, good rigidity
4726-11E	.157" DIA~1.575" DIA	universal stand, convenient operation
4726-21E	.079" DIA~1.575" DIA	universal stand, convenient operation