

INTERCHANGEABLE HEAD DIGITAL “CLICK” TORQUE WRENCHES (WIFI LAN)



DATA OUTPUT



IST-35W100

Torque wrench:

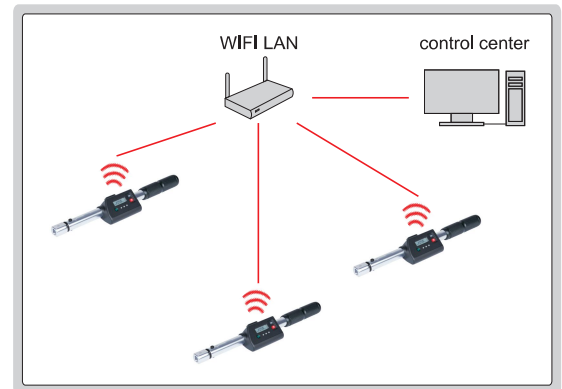
- Clockwise and counter-clockwise operation
- Unit: N.m, in.lb, ft.lb, kg.cm
- Peak and first peak working modes
- Maintain the click audible alarm feature of mechanical wrench
- Mechanical structure adjusts torque value, digital sensor displays real torque value, wrench can be used without torque tester
- Set the angle range to strictly monitor angle of the screw from fitting surface to tightening
- Alternate display of peak torque and angle after unloading, upper and lower tolerance limits can be set to determine pass or fail by LED lights
- Provide torque graph for analyzing and adjusting the tightening strategy
- Scanning module and scanning windows to match corresponding screws
- Open communication protocols for users to develop and interface with factory MES, PLC and other systems
- Automatic zeroing during continuous operation
- Memory of 1000 results
- Auto power off time can be set
- 2 high capacity rechargeable lithium batteries for alternate use
- Automatic correction by set factor when head is extended



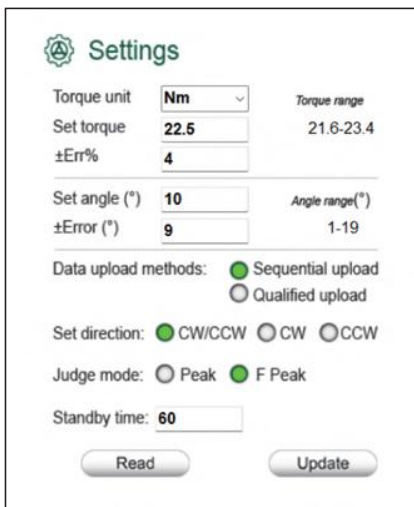
ratchet head (included)



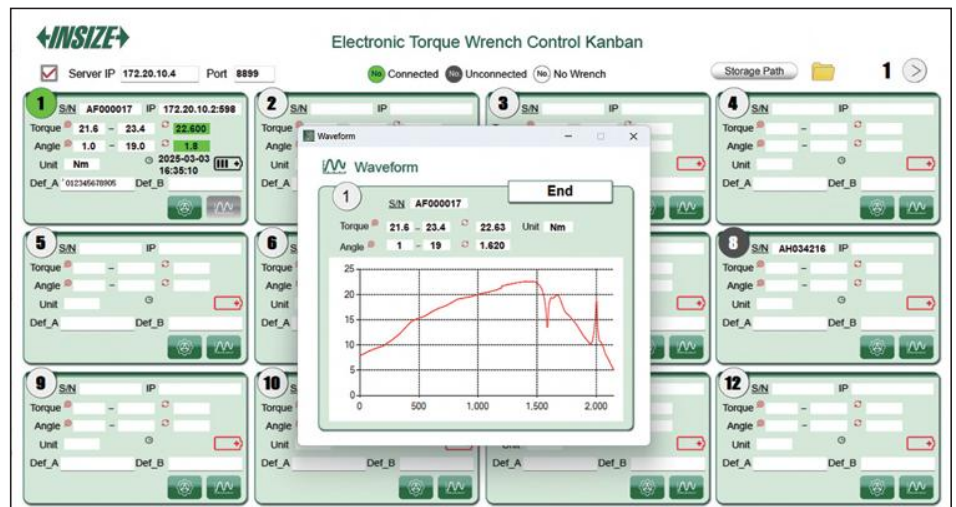
torque adjustment tool (included)



application



parameter setting software (included)



work display software (included)

Software:

- WIFI LAN real-time communication can receive and monitor 24 wrenches at the same time, data can be automatically sent to the centralized control center software
- Parameters can be set and matched directly to the wrench via USB connection to the software
- Can select whether the wrench only sends qualified data after operation (in accordance with the tolerance)
- The data is stored in the wrench when the wrench is disconnected, and the data is automatically uploaded to the computer after wireless connection, or can be uploaded manually through USB connection
- The data in the software is stored in a file with Txt and can be copied and exported to Excel

SPECIFICATION

| Part No. | Range | Accuracy | | Resolution | Socket size (A×B) | Square driver (D) | Standard effective length (L) | Length | Weight |
|------------|----------------|----------|--|------------|-------------------|-------------------|-------------------------------|--------|--------|
| | | Torque | Angle | | | | | | |
| IST-35W10 | 17.7~88.5lb.in | ±3% | ±1% of indicated value + ±1° (speed 10°~180°/s) + ±1° (clamping error) | 0.01lb.in | .47×.35" | 1/4" | 8.27" | 9.21" | 1.15lb |
| IST-35W20 | 35.4~177lb.in | | | 0.1lb.in | .47×.35" | 1/4" | 8.86" | 9.80" | 1.21lb |
| IST-35W30 | 53.2~266lb.in | | | 0.1lb.in | .47×.35" | 1/4" | 8.86" | 9.80" | 1.21lb |
| IST-35W60 | 88.5~531lb.in | | | 0.1lb.in | .47×.35" | 3/8" | 11.02" | 12.52" | 1.94lb |
| IST-35W100 | 14.8~73.8lb.ft | | | 0.01lb.ft | .47×.35" | 3/8" | 12.76" | 14.29" | 2.20lb |
| IST-35W200 | 29.6~148lb.ft | | | 0.1lb.ft | .71×.55" | 1/2" | 17.83" | 19.09" | 2.95lb |
| IST-35W300 | 44.2~221lb.ft | | | 0.1lb.ft | .71×.55" | 1/2" | 23.15" | 24.41" | 3.75lb |
| IST-35W400 | 59.0~295lb.ft | | | 0.1lb.ft | .71×.55" | 1/2" | 26.30" | 27.56" | 4.08lb |



OPEN END HEAD (optional)

| Part No. | Open size | Applicable wrenches | Part No. | Open size | Applicable wrenches |
|----------------|-----------|--|-----------------|-----------|--|
| IST-27WM-K4 | 1/8" | IST-35W10 IST-35W20 IST-35W30 IST-35W60 IST-35W100 | IST-27WM-K8A | 1/4" | IST-35W200 IST-35W300 IST-35W400 |
| IST-27WM-K6 | 3/16" | | IST-27WM-K14A | 7/16" | |
| IST-27WM-K7 | 7/32" | | IST-27WM-K16A | 1/2" | |
| IST-27WM-K8 | 1/4" | | IST-27WM-K18A | 9/16" | |
| IST-27WM-K10 | 5/16" | | IST-27WM-K20A | 5/8" | |
| IST-27WM-K12 | 3/8" | | IST-27WM-K22A | 11/16" | |
| IST-27WM-K14 | 7/16" | | IST-27WM-K24A | 3/4" | |
| IST-27WM-K16 | 1/2" | | IST-27WM-K26A | 13/16" | |
| IST-27WM-K17 | 17/32" | | IST-27WM-K28A | 7/8" | |
| IST-27WM-K18 | 9/16" | | IST-27WM-K29A | 29/32" | |
| IST-27WM-K20 | 5/8" | | IST-27WM-K30A | 15/16" | |
| IST-27WM-K22 | 11/16" | | IST-27WM-K31A | 31/32" | |
| IST-27WM-K24 * | 3/4" | | IST-27WM-K32A | 1" | |
| IST-27WM-K28 * | 7/8" | | IST-27WM-K36A * | 1-1/8" | |
| IST-27WM-K32 * | 1" | | IST-27WM-K40A * | 1-1/4" | |

* Torque value needs to be corrected for these heads

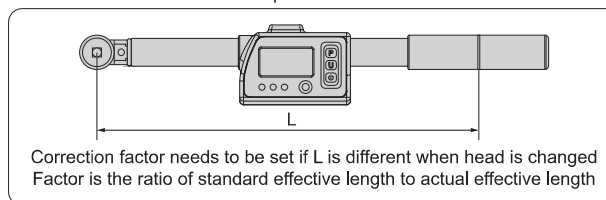
BOX END HEAD (optional)

| Part No. | Open size | Applicable wrenches |
|-----------------|-----------|--|
| IST-27WM-M8 | 1/4" | IST-35W10 IST-35W20 IST-35W30 IST-35W60 IST-35W100 |
| IST-27WM-M10 | 5/16" | |
| IST-27WM-M12 | 3/8" | |
| IST-27WM-M14 | 7/16" | |
| IST-27WM-M16 | 1/2" | |
| IST-27WM-M18 | 9/16" | |
| IST-27WM-M20 | 5/8" | IST-35W200 IST-35W300 IST-35W400 |
| IST-27WM-M12A | 3/8" | |
| IST-27WM-M16A | 1/2" | |
| IST-27WM-M18A | 9/16" | |
| IST-27WM-M20A | 5/8" | |
| IST-27WM-M24A | 3/4" | |
| IST-27WM-M26A | 13/16" | |
| IST-27WM-M28A | 7/8" | |
| IST-27WM-M32A | 1" | |
| IST-27WM-M36A * | 1-1/8" | |
| IST-27WM-M40A * | 1-1/4" | |

STANDARD DELIVERY

| | |
|-------------------------------------|-------|
| Digital torque wrench | 1 pc |
| Ratchet head | 1 pc |
| Torque adjustment tool | 1 pc |
| Type-C transmission cable | 1 pc |
| Centralized control center software | 1 set |
| Rechargeable lithium battery | 2 pc |
| Lithium battery charger | 1 pc |

torque correction



OPTIONAL ACCESSORY

| | |
|---|---|
| Non-standard wrench heads | customized according to customer requirements |
| Web framework extension software system | |