

HANDHELD 3D SCANNER

PART No. LSM-L340



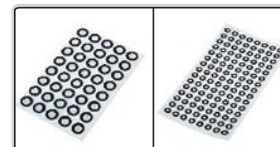
scan indicator



multi-function keys



calibration plate(included)



R3mm and R1.5mm marks(included)

- Dual-layer LED design for clear deep hole scanning
- AI algorithm module, greatly improve the scanning effect
- Highly efficient scanning with ultra-fast measuring speeds
- Metrology-grade measuring accuracy

SPECIFICATION

Scanning mode	hige-speed scanning	26 cross blue laser lines
	precision scanning	7 parallel blue laser lines
	deep hole scanning	1 blue laser line
Maximum scanning speed		3800000 measurements/s
Volume accuracy		0.020mm+0.030mm/m
Laser class		CLASS II (eye-safe)
Maximum resolution		0.01mm
Depth of field		21.6"
Reference distance		11.8"
Maximum scanning field		25.6"×21.6"
Output format		.stl.ply .txt
Interface		USB3.2
Power supply		100-240V, 50/60HZ
Dimension (L×W×H)		12.4×5.5×3.4"



High-speed scanning: 26 cross blue laser lines



Precision scanning: 7 parallel blue laser lines



Deep hole scanning: 1 blue laser line

STANDARD DELIVERY

Main unit	1pc
Scanning software	1pc
R1.5mm mark	1000pcs
R3.0mm mark	4000pcs
Calibration plate	1pc

OPTIONAL ACCESSORY

3D measuring software	CMM-CEM-PI
Computer	customized according to measuring requirements

SCANNING SOFTWARE(INCLUDED)

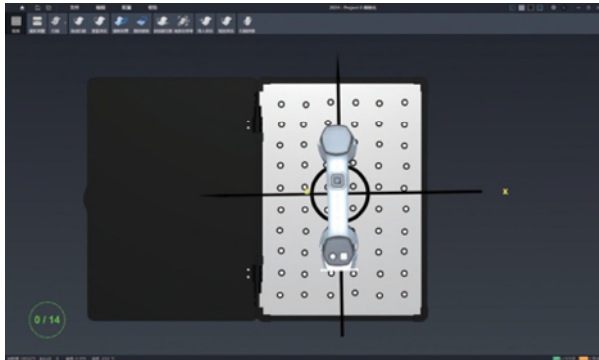
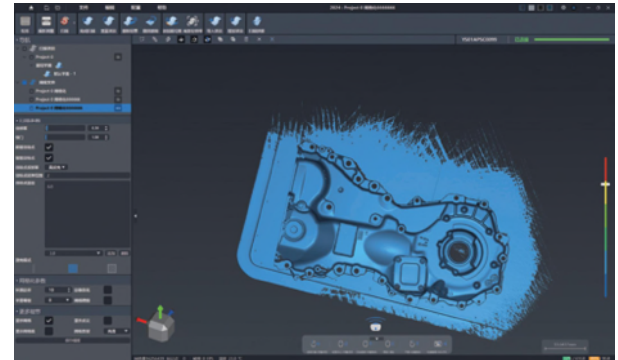
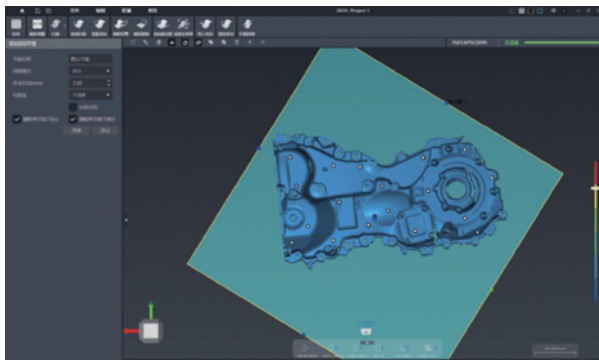


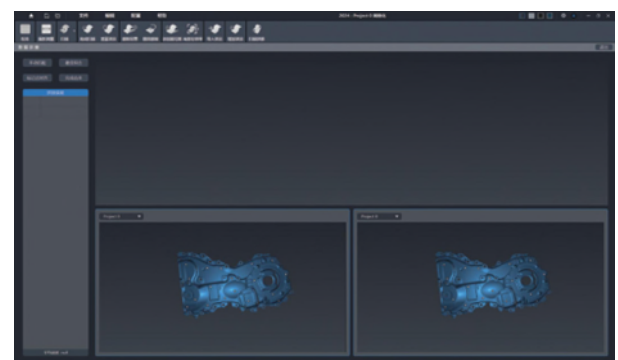
image-guide calibration



point cloud meshing



invalid area removal



scanning splicing