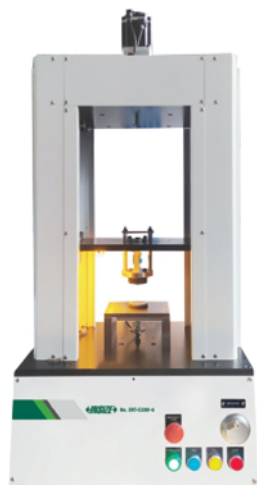


## AUTOMATIC SPRING TESTING MACHINES

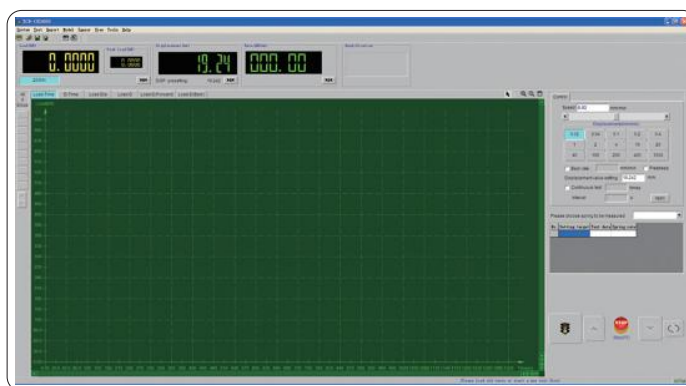


SRT-C200-U



SRT-C10K-U

- Applicable to all types of springs tension, compression tests
- Utilize high-strength load frame structure equipped with four lead screws and two guide columns to ensure stable and reliable loading
- Automatic zero seeking function
- Force unit: lb, N, kg, displacement unit: in, mm
- Test data and curve can be stored automatically, test report can be generated automatically
- With force overload protection, beam limit position protection, overload protection



computer and software (included)

### SPECIFICATION

Part No.	SRT-C10-U	SRT-C50-U	SRT-C100-U	SRT-C200-U	SRT-C500-U	SRT-C1K-U	SRT-C2K-U
Max. test force	10N	50N	100N	200N	500N	1KN	2KN
Range of test force	1%-100%FS						
Resolution of test force	1/100000FS						
Accuracy class	0.5 class						
Accuracy of test force	±0.5% of indicating value						
Range of displacement speed	.00039~19.69in/min(0.01~500mm/min)						
Resolution of displacement	.00039"(0.01mm)						
Accuracy of displacement	±( 50+0.15L )μm (Note: L is the distance between two compression fixtures, mm)						
Max. compression spring height	13.78"						
Max. tension space	13.78"						
Diameter of compression fixture	1.97" DIA				4.72" DIA		
Power supply	AC 110V, 60Hz, 300W				AC 110V, 60Hz, 600W		
Dimension ( W × D × H )	27.56×12.99×32.68"				27.56×12.99×32.68"		
Weight	154.32lb				374.79lb		

## SPECIFICATION

Part No.	SRT-C5K-U	SRT-C10K-U	SRT-C20K-U	SRT-C50K-U
Max. test force	5KN	10KN	20KN	50KN
Range of test force	1%-100%FS			
Resolution of test force	1/100000FS			
Accuracy class	0.5 class			
Accuracy of test force	±0.5% of indicating value			
Range of displacement speed	.00039~19.69in/min(0.01~500mm/min)			
Resolution of displacement	.00039"(0.01mm)			
Accuracy of displacement	±( 50+0.15L )μm (Note: L is the distance between two compression fixtures, mm)			
Max. compression spring height	29.53"			
Max. tension space	29.53"			
Diameter of compression fixture	7.87" DIA			
Power supply	AC 110V, 60Hz, 1200W			
Dimension ( W × D × H )	29.53×32.68×59.06"			
Weight	551.16lb			

## STANDARD DELIVERY

Main unit	1 pc
Computer	1 set
Software	1 set
Printer	1 pc
Pull clamp	1 set
Compression fixture	1 set